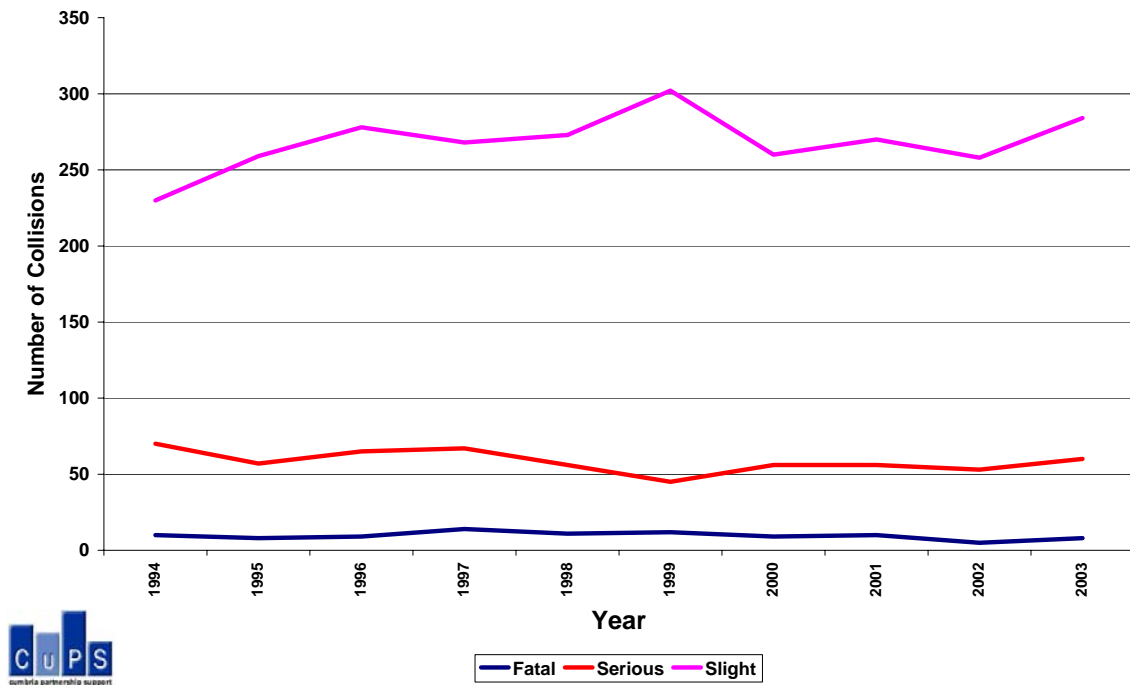


## 1.1 Perspective (Setting the Scene)

1.1.1 Table to show the number of Injury Collisions in Allerdale by Year between 1994 and 2003.

Year	Fatal	Serious	Slight	Total
1994	10	70	230	310
1995	8	57	259	324
1996	9	65	278	352
1997	14	67	268	349
1998	11	56	273	340
1999	12	45	302	359
2000	9	56	260	325
2001	10	56	270	336
2002	5	53	258	316
2003	8	60	284	352
<b>Total</b>	<b>96</b>	<b>585</b>	<b>2682</b>	<b>3363</b>


1.1.2 Graph to show the Timeline of Injury Collisions in Allerdale between 1994 and 2003.



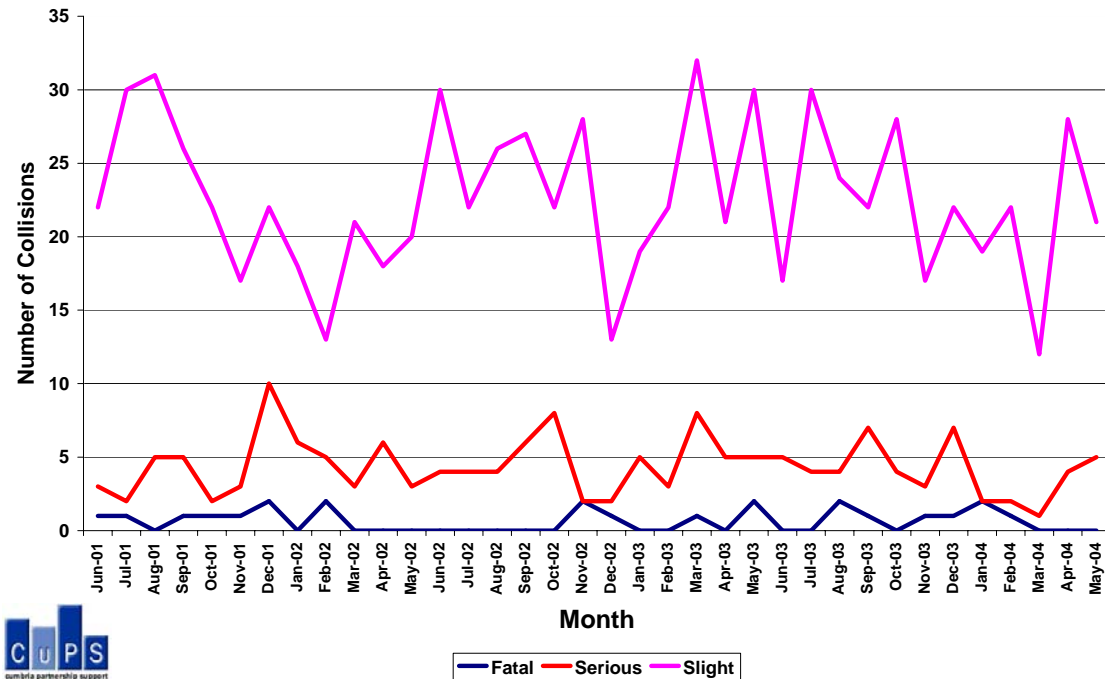
— Fatal — Serious — Slight



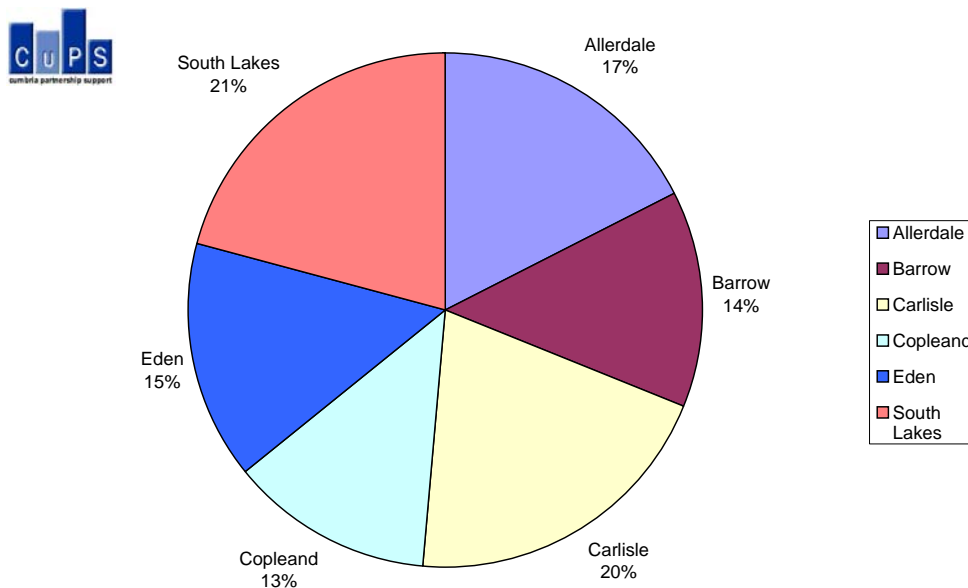
1.1.3 Table to show the number of Injury Collisions in Allerdale by Month and Year between 01 June 2001 and 31 May 2004.

 Month and Year	Fatal	Serious	Slight	Total
Jun-01	1	3	22	26
Jul-01	1	2	30	33
Aug-01	0	5	31	36
Sep-01	1	5	26	32
Oct-01	1	2	22	25
Nov-01	1	3	17	21
Dec-01	2	10	22	34
Jan-02	0	6	18	24
Feb-02	2	5	13	20
Mar-02	0	3	21	24
Apr-02	0	6	18	24
May-02	0	3	20	23
Jun-02	0	4	30	34
Jul-02	0	4	22	26
Aug-02	0	4	26	30
Sep-02	0	6	27	33
Oct-02	0	8	22	30
Nov-02	2	2	28	32
Dec-02	1	2	13	16
Jan-03	0	5	19	24
Feb-03	0	3	22	25
Mar-03	1	8	32	41
Apr-03	0	5	21	26
May-03	2	5	30	37
Jun-03	0	5	17	22
Jul-03	0	4	30	34
Aug-03	2	4	24	30
Sep-03	1	7	22	30
Oct-03	0	4	28	32
Nov-03	1	3	17	21
Dec-03	1	7	22	30
Jan-04	2	2	19	23
Feb-04	1	2	22	25
Mar-04	0	1	12	13
Apr-04	0	4	28	32
May-04	0	5	21	26

1.1.4 Graph to show the Timeline of Injury Collisions in Allerdale between 01 June 2001 to 31 May 2004



1.1.5 Number of Injury Collisions by District. Date Range: 01/06/2001 to 31/05/2004. Total Number of Collisions = 5712



## 1.2 Review of Collision Initiatives, Schemes and Projects


### 1.3 Analysis and Interpretation


All the analysis in this document uses the date range 01/06/2001 to 31/05/2004 unless stated otherwise.

#### 1.3.1 Table to Show the Main Causation Factors of Injury Collisions in Allerdale.

 Main Causation Factor	Type and Details	Fatal	Serious	Total
Driver/Rider	Judgement Error - Losing Control	5	38	43
Driver/Rider	Judgement Error - Wrong Course Positioning	2	30	32
Passenger/Pedestrian	Pedestrian - Crossing or In Road	2	17	19
Driver/Rider	Negligence - Overtaking Negligently	2	15	17
Driver/Rider	Judgement Error - Junction Overshoot	1	13	14
Driver/Rider	Special Factors - Going too fast for conditions	3	11	14
Driver/Rider	Negligence - Turning Right Negligently	0	9	9
Driver/Rider	Judgement Error - Following too Close	0	7	7
Driver/Rider	Judgement Error - Junction Restart	0	4	4
Driver/Rider	Negligence - Stopping Negligently	1	3	4
Other Causation Factors	Local Codes - Cyclist riding on/off Pavement	0	4	4
Driver/Rider	Special Factors - Alcohol Positive	2	1	3
Driver/Rider	Special Factors - Emerging from Minor Roads	0	3	3
Driver/Rider	Negligence - Changing Lane Negligently	0	2	2
Driver/Rider	Negligence - Starting Negligently	0	2	2
Other Causation Factors	Local Codes - Inexperienced Driver/ Rider	0	2	2
Driver/Rider	Judgement Error - Disobeyed Sign/Signal	0	1	1
Driver/Rider	Negligence - Opening Door Negligently	0	1	1
Driver/Rider	Negligence - Reversing Negligently	0	1	1
Driver/Rider	Negligence - Turning Left Negligently	0	1	1
Driver/Rider	Negligence - U' Turning Negligently	0	1	1
Driver/Rider	Special Factors - Exceeding Speed Limit	0	1	1
Driver/Rider	Special Factors - Fatigue or Illness	0	1	1
Driver/Rider	Special Factors - High Winds Contributory	0	1	1
Driver/Rider	Vision Affected - Dazzled by Headlights	0	1	1
Driver/Rider	Vision Affected - Dazzled by Sun	0	1	1
Driver/Rider	Vision Affected - Fog	0	1	1
Driver/Rider	Vision Affected - Heavy Rain, Sleet or Snow	0	1	1
Other Causation Factors	Local Codes - Animal on Road	0	1	1
Other Causation Factors	Local Codes - Inadequate Vehicle Lighting	0	1	1
Other Causation Factors	Local Codes - Object in Carriageway	0	1	1
Other Causation Factors	Local Codes - Unknown Cause	0	1	1
Passenger/Pedestrian	Passenger - Boarding, Alighting or Falling inside p.s.v.	0	1	1
Road Environment	Vision Obscured - By Brow of Hill	0	1	1
Road Environment	Vision Obscured - By Fences, Buildings, Walls etc	0	1	1
Road Environment	Vision Obscured - By Parked Vehicle	0	1	1
Road Environment	Vision Obscured - By Vegetation etc	0	1	1
Vehicle Defect	Vehicle Defect - Defective Brakes (or Suspected)	0	1	0

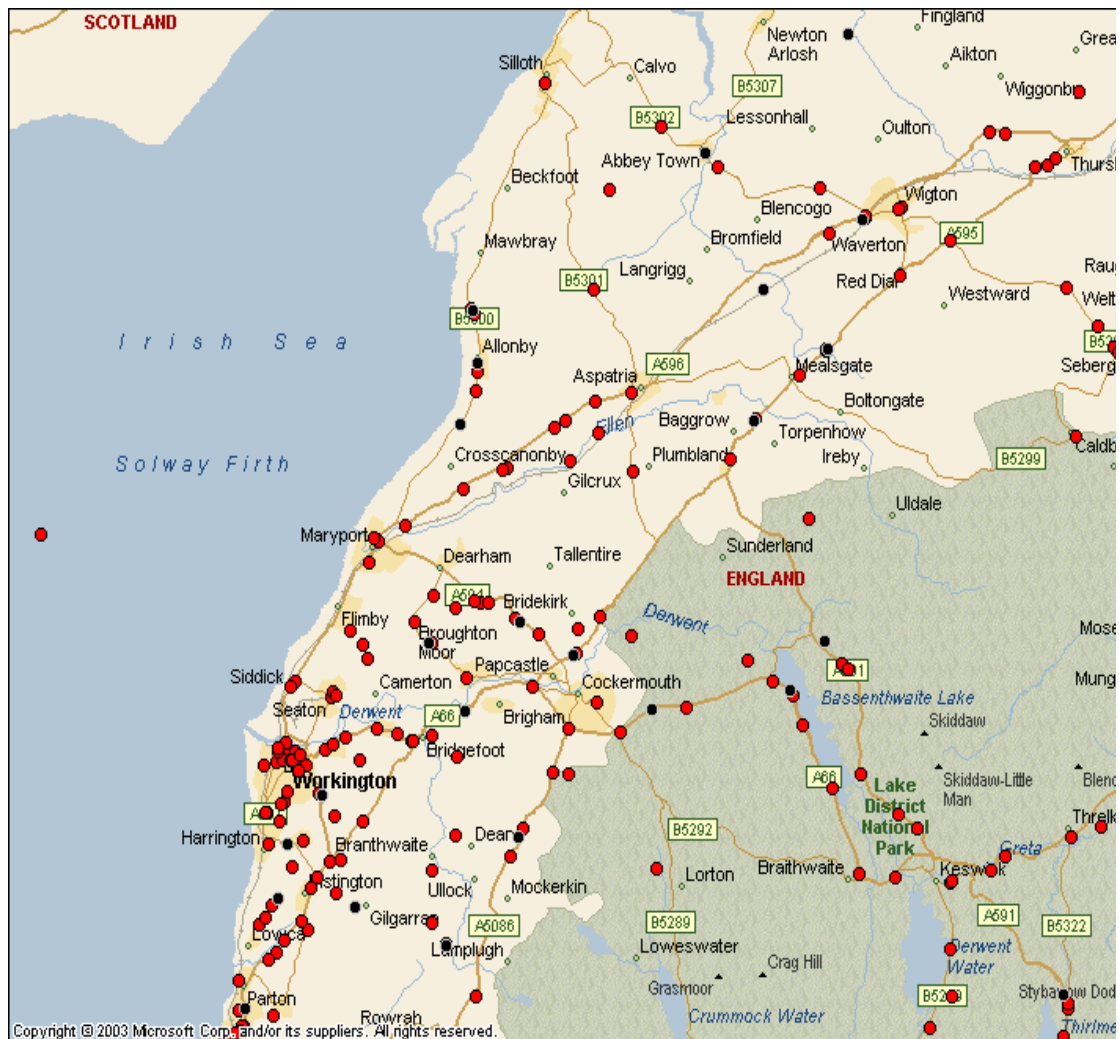
### 1.3.2 Tables to Show the Road Names and Road Types Where Injury Collisions Have Occurred in Allerdale.

 CUPS cumbria partnership support			
Road Name	Fatal	Serious	Total
Unclassified	2	40	42
A596	3	21	24
A595	3	18	21
A66	2	19	21
A591	2	13	15
B5300	3	5	8
A594	1	6	7
B5302	1	5	6
B5305	0	5	5
C	1	4	5
A5086	1	3	4
A597	1	3	4
B5289	0	2	2
B5299	0	2	2
B5301	0	2	2
C2007	1	1	2
A956	0	1	1
B5297	0	1	1
B5322	0	1	1
C2001	0	1	1
C2065	1	0	1
C2069	0	1	1
C300	0	1	1
Unclassified2042	1	0	1
Unclassified2706	0	1	1

 CUPS cumbria partnership support			
Road Type	Fatal	Serious	Total
A -Road	13	84	97
Unclassified Road	3	42	45
B -Road	4	23	27
C -Road	3	8	11

Please note the data on unclassified roads may include roads in towns that are actually A-roads (proceed with caution, it is merely an indicator).

1.3.3 Map to show Allerdale District and the location of Killed and Seriously Injured Collisions that have occurred between 1<sup>st</sup> June 2001 and 31<sup>st</sup> May 2004

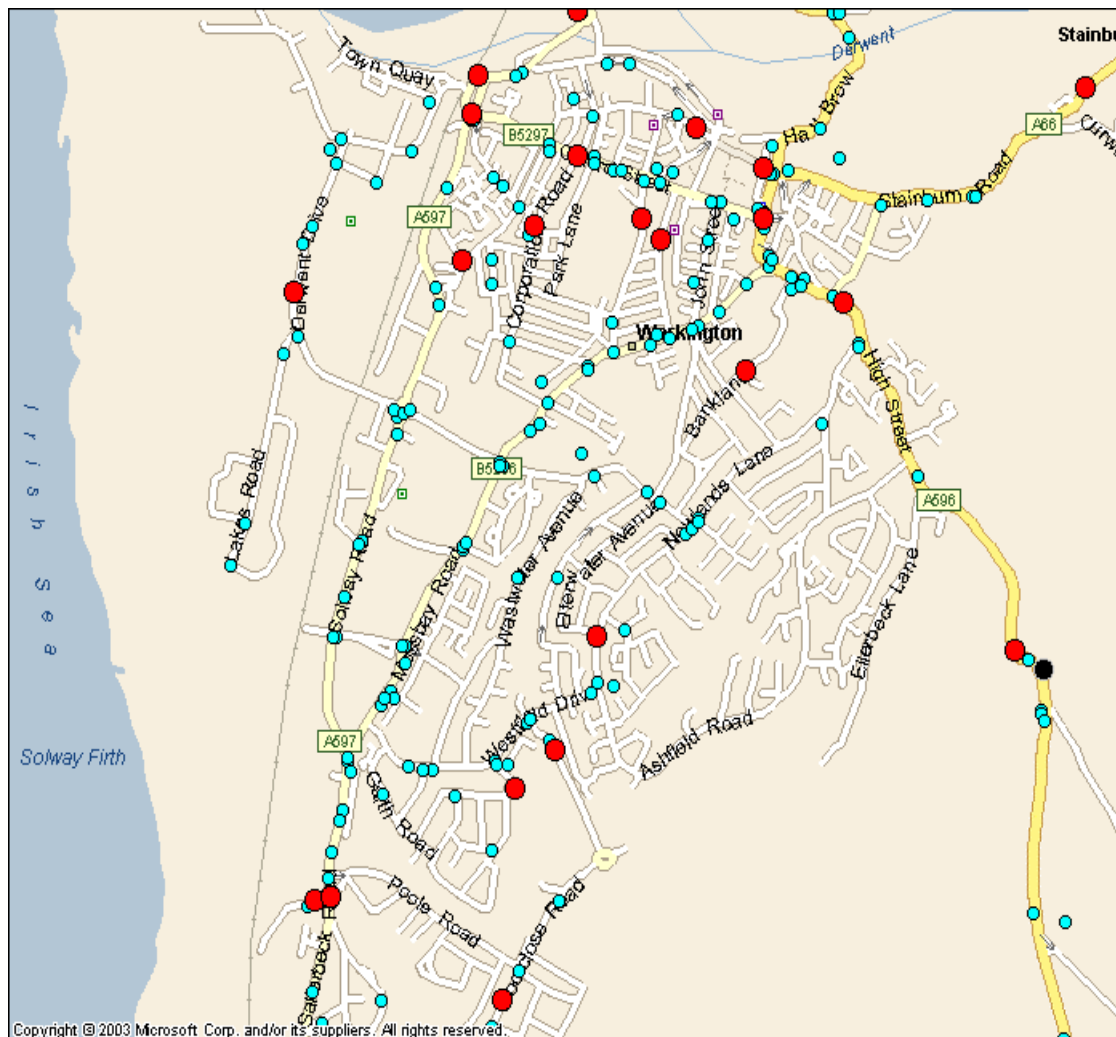


**Legend**

- Fatal Collisions
- Serious Collisions



1.3.4 Map to show Workington Town Centre and the location of the Fatal, Serious and Slight Collisions that have occurred between 1<sup>st</sup> June 2001 and 31<sup>st</sup> May 2004

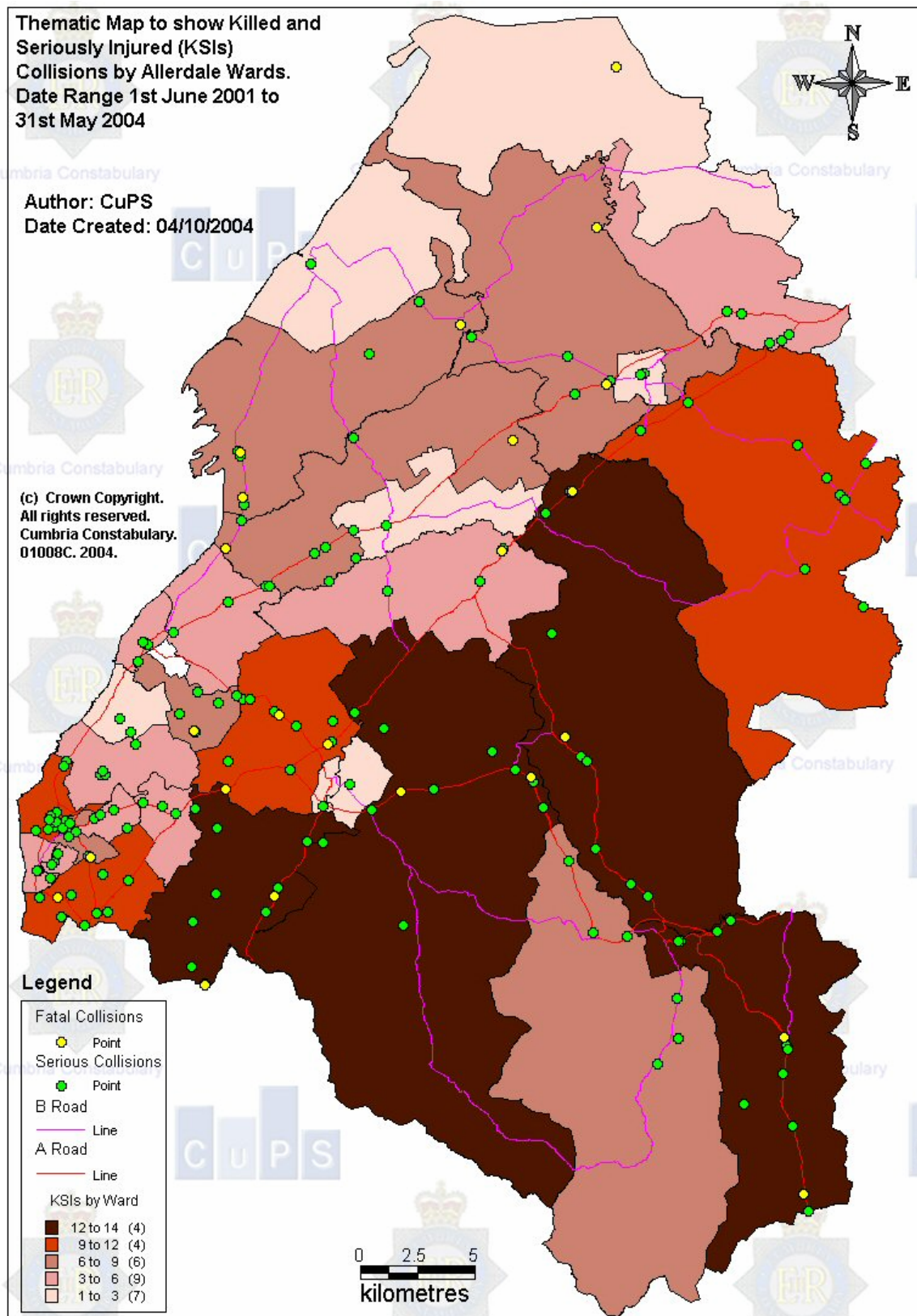


**Legend**


- Fatal Collisions
- Serious Collisions
- Slight Collisions




1.3.5 Thematic Map to show the number of Killed and Seriously Injured Collisions by Allerdale Ward



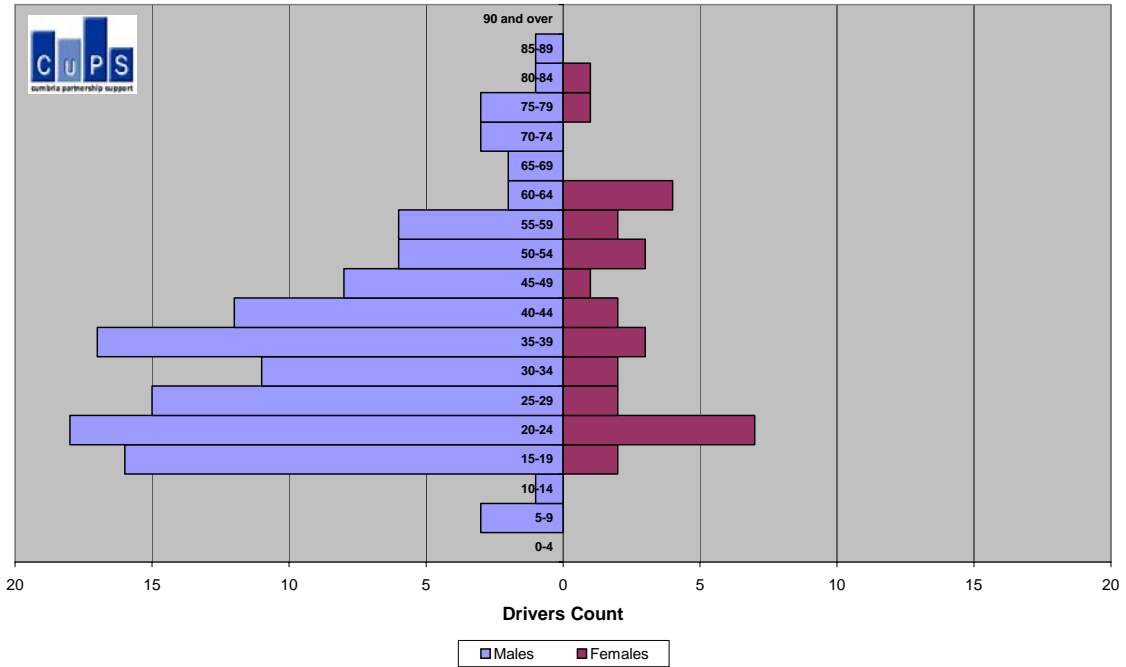
### 1.3.6 Table to Show the Speed Limit and Severity of Injury Collisions in Allerdale.

						
Speed Limit						
Severity Type	20	30	40	50	60	70
Fatal	0	2	0	1	19	1
Serious	0	41	6	3	103	4
Slight	3	390	41	22	343	15
<b>Total</b>	<b>3</b>	<b>433</b>	<b>47</b>	<b>26</b>	<b>465</b>	<b>20</b>

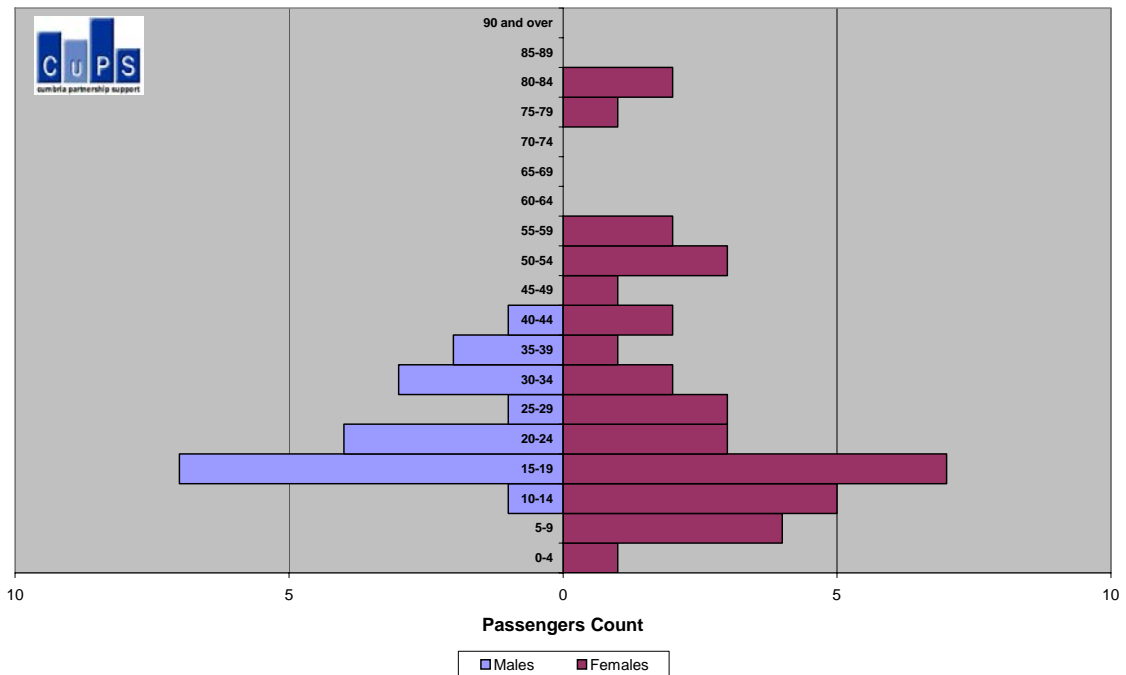
### 1.3.7 Table to Show the Vehicle Type and Severity of Collisions in Allerdale.

				
Vehicle Type	Fatal	Serious	Slight	Total Injury Collisions
Car	10	67	424	501
Goods vehicle 3.5 tonnes mgw and under	1	2	28	31
Heavy Goods Vehicle	1	1	17	19
Motor Cycle over 125cc	0	8	10	18
Pedal Cycle	0	6	9	15
Other Motor Vehicle	0	1	6	7
Taxi	2	1	1	4
Bus of Coach (17 or more passenger seats)	0	0	3	3
Motor Cycle 125cc or under	0	0	2	2
Minibus (8-16 passenger seats)	0	0	1	1
Moped	0	0	1	1
Other non-motor vehicle	0	0	1	1

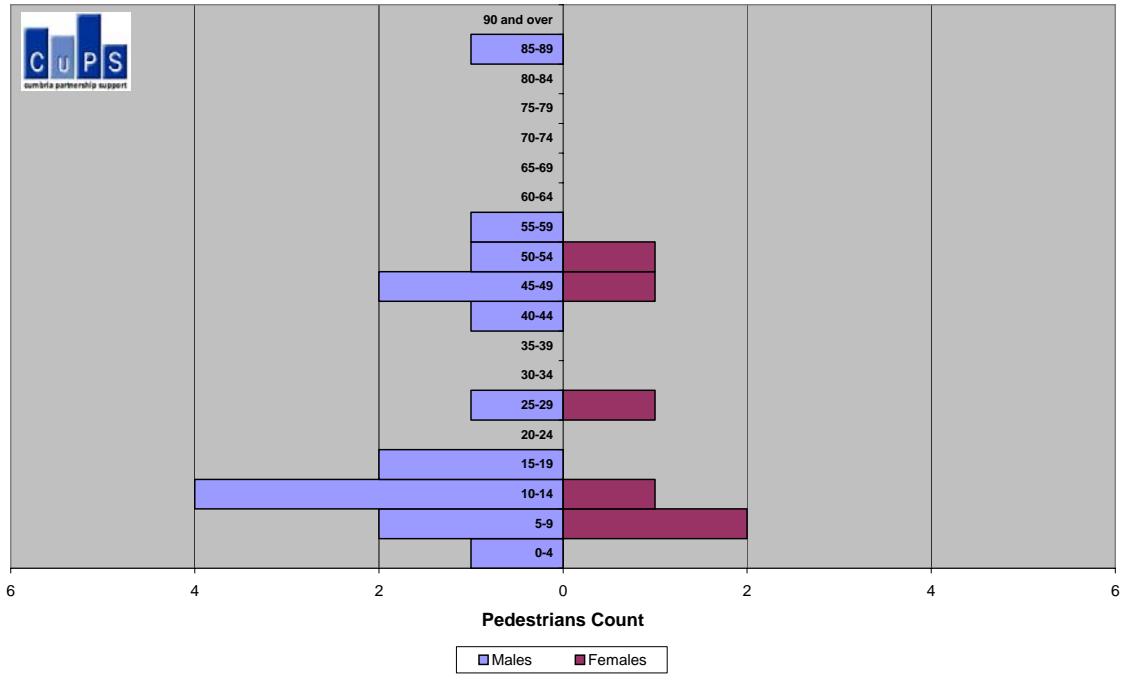
**1.3.7 The Age and Gender of Drivers Killed and Seriously Injured (KSI) in Collisions in Allerdale. Date Range: 01/06/2001 to 31/05/2004.**



**1.3.8 The Age and Gender of Passengers Killed and Seriously Injured (KSI) in Collisions in Allerdale. Date Range: 01/06/2001 to 31/05/2004.**

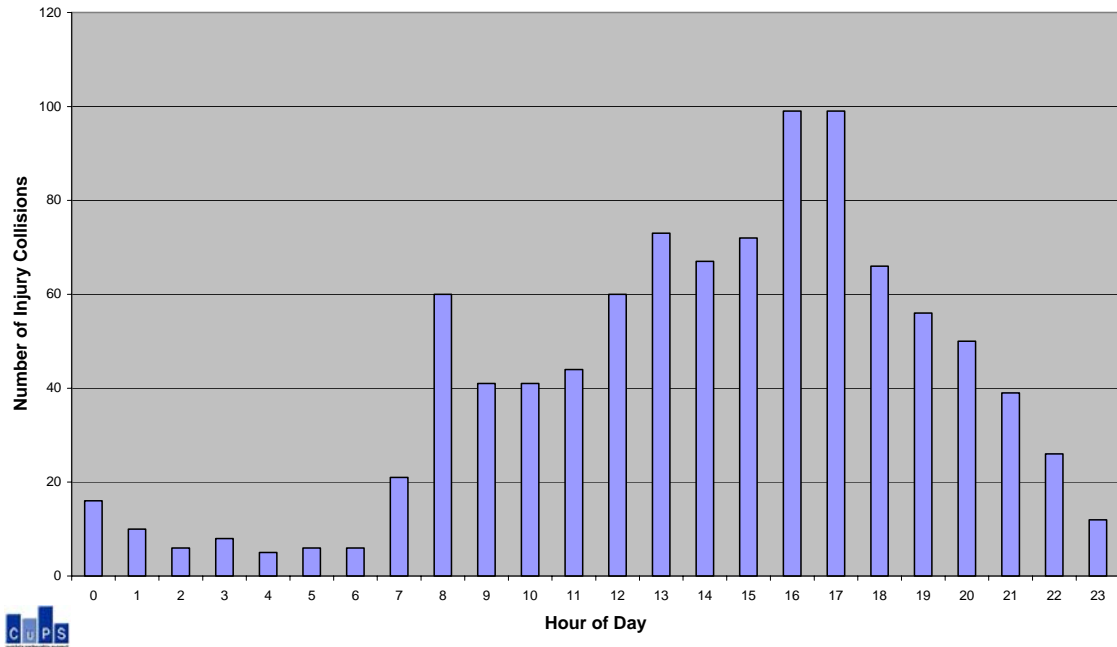


1.3.9 The Age and Gender of Pedestrians Killed and Seriously Injured (KSI) in Collisions in Allerdale. Date Range: 01/06/2001 to 31/05/2004.

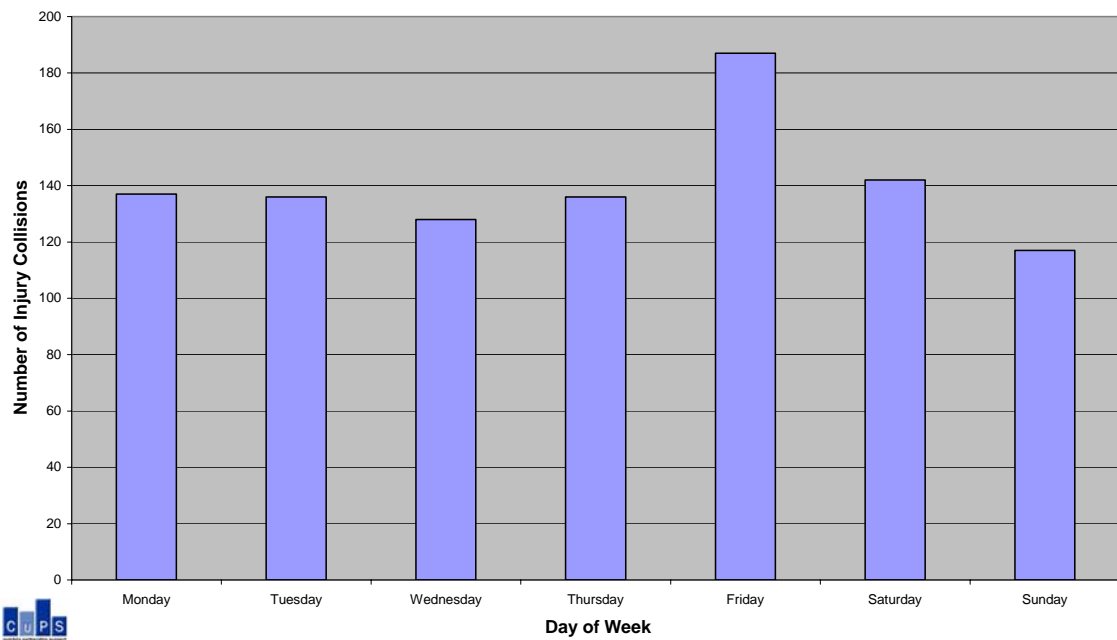


1.3.10 Temporal Analysis of Crimes


1.3.10.1 Bar Chart to show the Hour of Day Injury Collisions Occurred in Allerdale



1.3.10.2 Bar Chart to show the Day of Week Injury Collisions Occurred in Allerdale



1.3.10.3 Table to show Injury Collisions in Allerdale by day of the week and hour of the day.

 Hour of Day	Monday	Tuesday	Wednesday	Thursday	Friday	Saturday	Sunday	Grand Total
0	0	1	1	1	3	5	5	16
1	1	1	1	0	1	4	2	10
2	0	1	0	0	2	0	3	6
3	0	2	0	0	1	3	2	8
4	0	0	0	0	0	2	3	5
5	1	1	0	0	2	1	1	6
6	1	1	2	1	1	0	0	6
7	4	3	4	3	4	2	1	21
8	9	10	14	11	8	6	2	60
9	5	7	8	5	7	5	4	41
10	8	6	4	6	9	7	1	41
11	10	6	4	4	6	7	7	44
12	7	8	3	11	11	11	9	60
13	7	9	5	12	13	13	14	73
14	7	13	6	10	16	9	6	67
15	16	10	6	14	13	8	5	72
16	9	16	17	10	21	14	12	99
17	16	10	16	14	20	12	11	99
18	9	8	7	15	7	10	10	66
19	8	5	10	7	13	8	5	56
20	6	9	11	2	7	8	7	50
21	9	6	5	3	10	2	4	39
22	3	2	4	5	8	2	2	26
23	1	1	0	2	4	3	1	12
<b>Grand Total</b>	<b>137</b>	<b>136</b>	<b>128</b>	<b>136</b>	<b>187</b>	<b>142</b>	<b>117</b>	<b>983</b>

Values greater than 15 are highlighted.