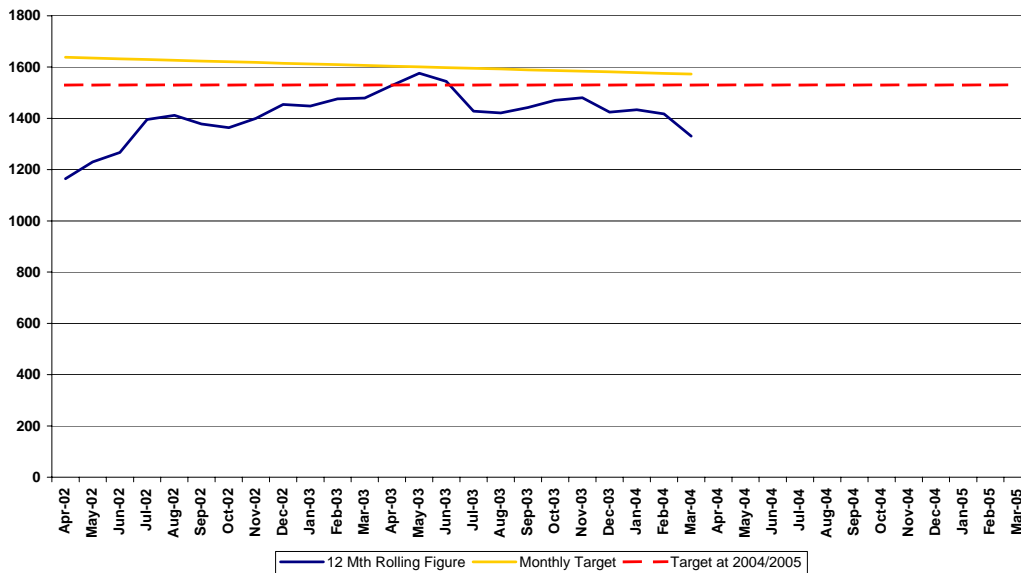


6.1 Perspective (Setting the Scene)

6.1.1 Progress of Allerdale CDRP against Theft of a Motor Vehicle Target

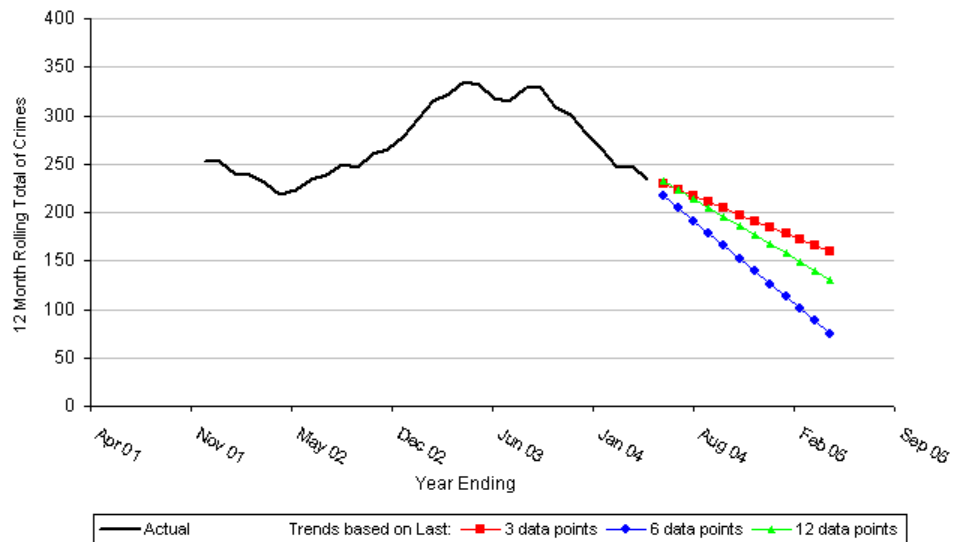
Please note that this graph depicts all Vehicle Crimes, this includes the Thefts from a Motor Vehicle and the Theft of a Motor Vehicle

Progress of Allerdale CDRP against Vehicle Crime Target



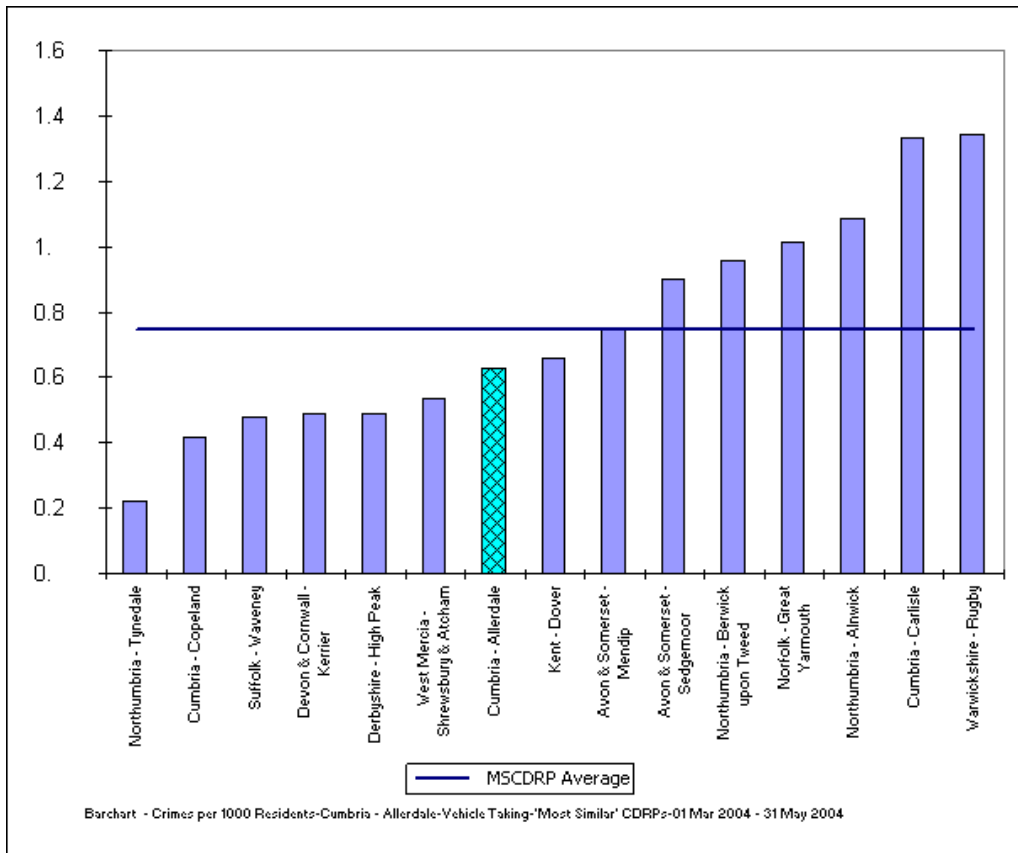
6.1.2 Predicted projection for end of year figures. Theft of a Motor Vehicle Crimes in Allerdale.

Date Range: 01 Jan 2002 to 31 May 2004.

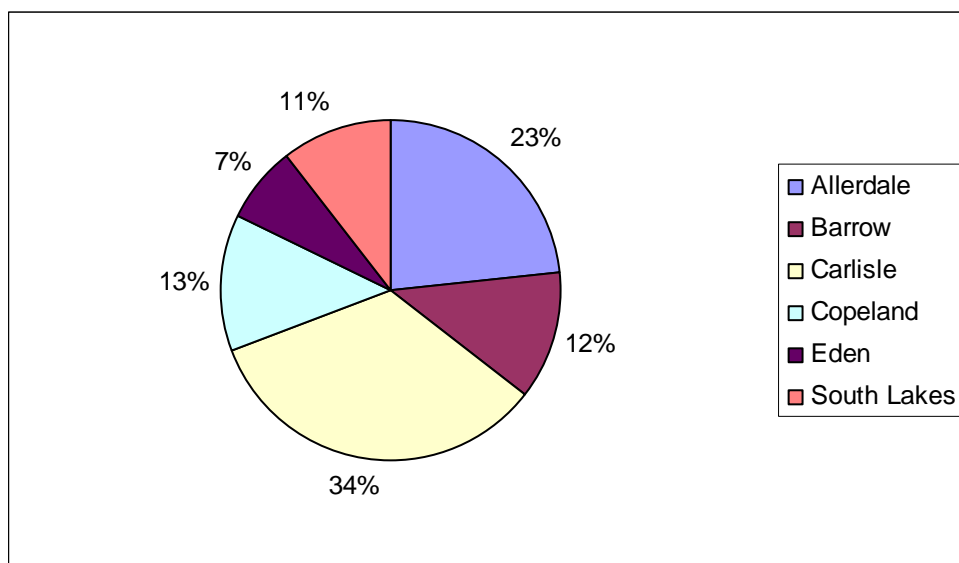


Projection - Number of Crimes-Cumbris - Allerdale-Vehicle Taking-01 Jun 02 - 31 May 04

6.1.3 Comparison Bar Chart to family of CDRP's. Theft of a Motor Vehicle Crimes per 1000 Residents. Date range: 01 Mar 2004 to 31 May 2004.



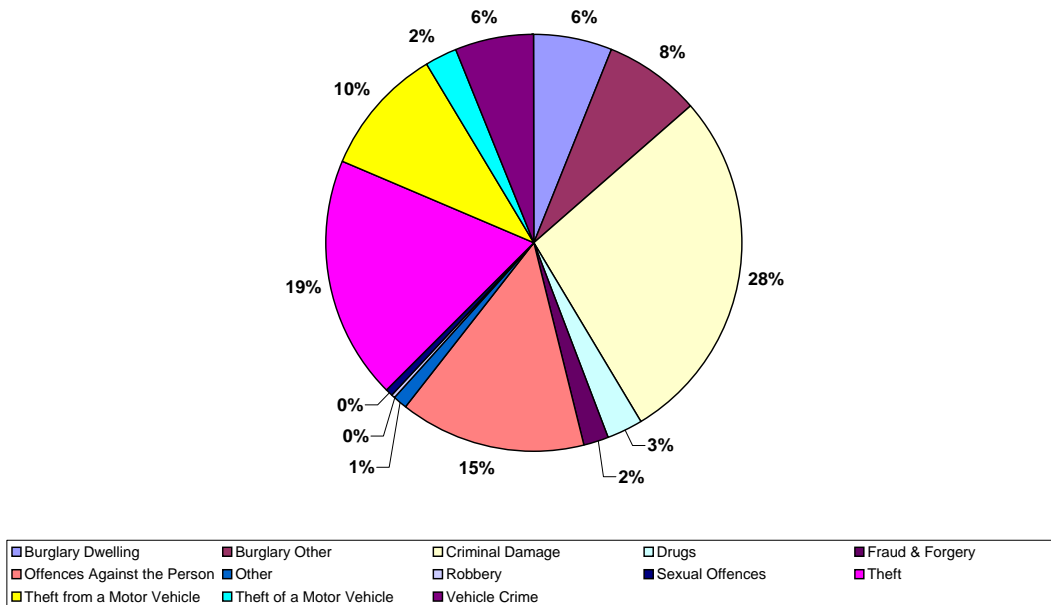
6.1.4 Pie Chart to show the Percentage Distribution of Theft of a Motor Vehicle in Cumbria. Total Number of Offences 3,417. Date Range: 01 April 2001 to 31 March 2004.



6.1.5 Chart to show Theft of a Motor Vehicle as a percentage of all Crime in Allerdale.

Date range: 01 April 2001 to 31st March 2004.

Total number of crimes = 23473



6.1.6 Table to show the Crime Detection rate for Theft of a Motor Vehicle in Allerdale

Detected Flag	Theft of a Motor Vehicle	Percentage
Not Detected	665	83%
Detected	132	17%

## 6.2 Review of Theft of a Motor Vehicle Initiatives, Schemes and Projects

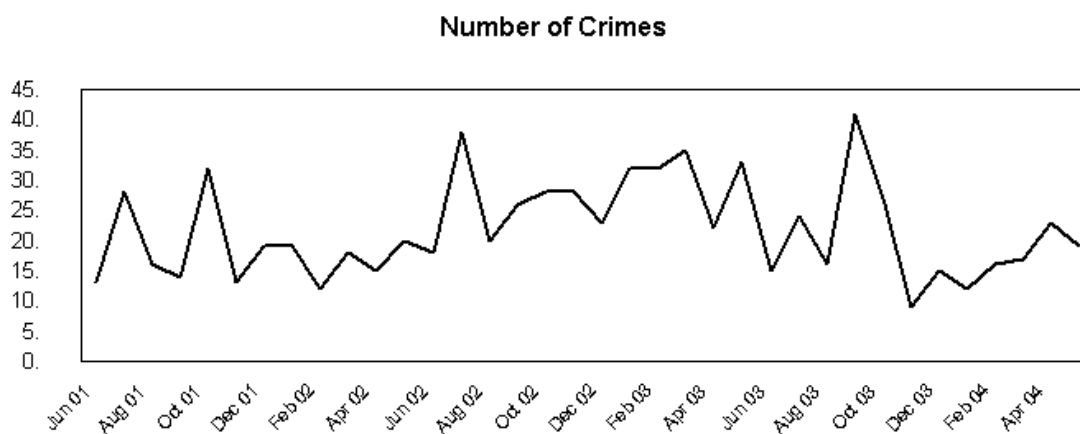
### 6.3 Analysis and Interpretation

All the analysis in this document uses the date range 01 April 2001 to 31 March 2004 unless otherwise stated.

#### 6.3.1 Crimes and Location

##### 6.3.1.1 Timeline Graph to show the number of Theft of a Motor Vehicle Crimes in Allerdale by Month.

Date Range: 01 June 2001 to 31 May 2004.



Significant Change - Number of Crimes-Cumbris - Allerdale-Vehicle Taking-1 Jun 2001 - 31 May 2004

##### 6.3.1.2 Number of Theft of a Motor Vehicle Crimes in Allerdale per year by Offence Title

Offence Title	2001/2002	2002/2003	2003/2004	Total
AGG TAKE M/V W/O CONSENT INJURY/DAMAGE	26	35	29	90
ATTEMPT THEFT OF MOTOR VEHICLE	1	10	5	16
TAKE MOTOR VEHICLE W/O CONSENT OF OWNER	132	186	137	455
THEFT OF MOTOR VEHICLE	76	88	72	236
<b>All Theft of a Motor Vehicle Offences</b>	<b>235</b>	<b>319</b>	<b>243</b>	<b>797</b>

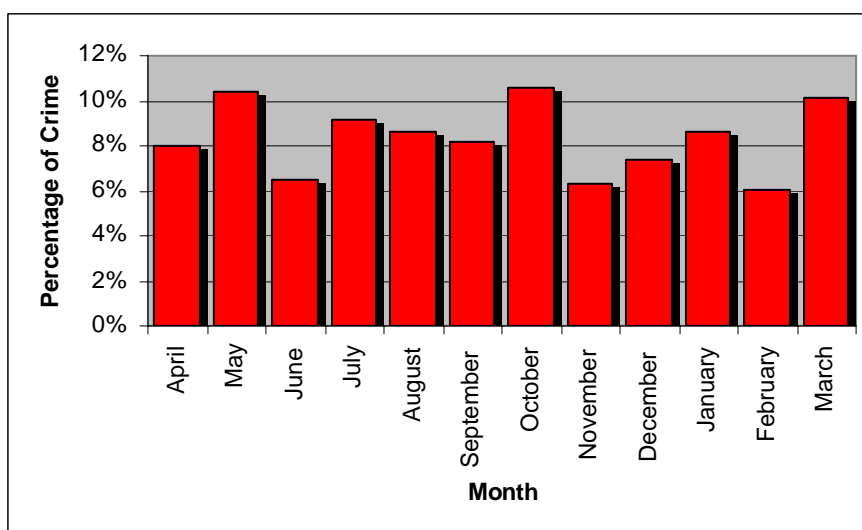
### 6.3.1.3 Acorn groupings of Theft of a Motor Vehicle Crimes in Allerdale.

ACORN Group	ACORN Group Names	Number of Crimes	Percentage of Crimes
A	Wealthy Executives	11	1%
B	Affluent Greys	69	9%
C	Flourishing Families	36	5%
E	Educated Urbanites	3	0%
F	Aspiring Singles	5	1%
G	Starting Out	4	1%
H	Secure Families	57	7%
I	Settled Suburbia	28	4%
J	Prudent Pensioners	20	3%
L	Post-Industrial Families	10	1%
M	Blue-collar Roots	273	34%
N	Struggling Families	191	24%
O	Burdened Singles	84	11%
P	High-Rise Hardship	6	1%
<b>TOTAL</b>		<b>797</b>	<b>100%</b>

### 6.3.2 Temporal Analysis of Crimes

#### 6.3.2.1 Graph to show the percentage of Theft of Motor Vehicles in Allerdale by Month

Total number of crimes = 797



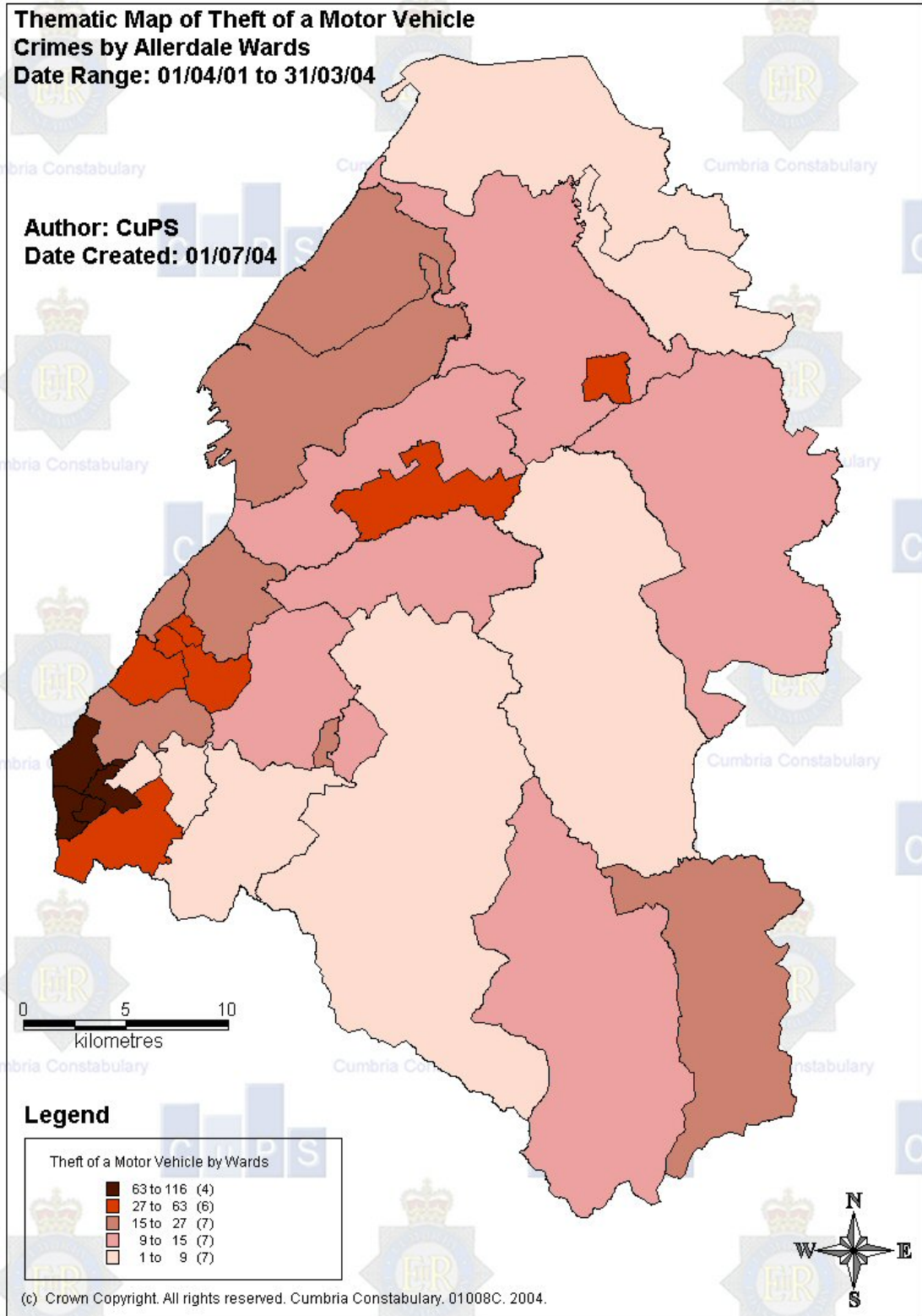
**6.3.2.2 Table to show the Theft of a Motor Vehicle Crimes in Allerdale by day of the week and hour of the day.**

Earliest Hour	Monday	Tuesday	Wednesday	Thursday	Friday	Saturday	Sunday	Grand Total
0	3	5	7	2	8	8	7	40
1	2	6	1	1	4	7	5	26
2	1	3	2	2	4	3	1	16
3	2	2	1	3	3	5	2	18
4					1		2	3
5	1				1	2		4
6			2					2
7	1		1		2			4
8	1	2		5	1	1		10
9		1	3			3	5	12
10	1	1	2	1	3			8
11	3	2	1	1	2	1	2	12
12	3	1	4		2	6	2	18
13	2	2	3	1	2	3		13
14	1	3	4	1	3	6	2	20
15	1	3	2	4	4	5	3	22
16	3	2	3	3	7	8	2	28
17	8	6	6	7	9	11	4	51
18	8	3	8	10	14	16	5	64
19	10	10	9	8	17	26	16	96
20	12	8	4	9	15	25	6	79
21	16	10	12	15	19	8	7	87
22	16	19	18	14	17	15	7	106
23	4	8	9	12	8	11	4	56
No Hour Available						1	1	2
Grand Total	99	97	102	99	146	171	83	797

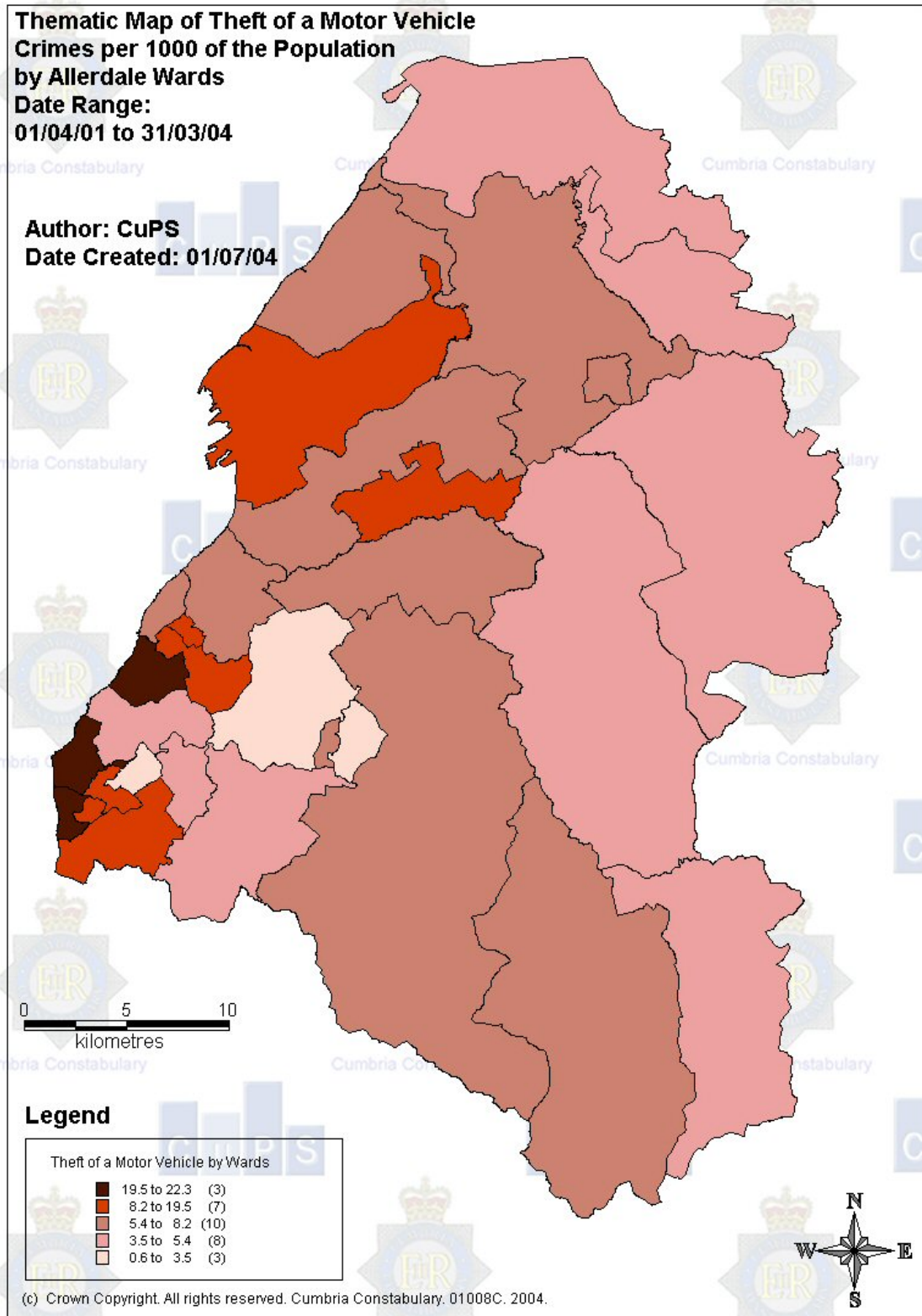
Values greater than 15 highlighted

6.3.3 Crimes Mapping

6.3.3.1 Thematic Map of Theft of a Motor Vehicle Allerdale Wards  
Date Range 01 April 2001 to 31 March 2004

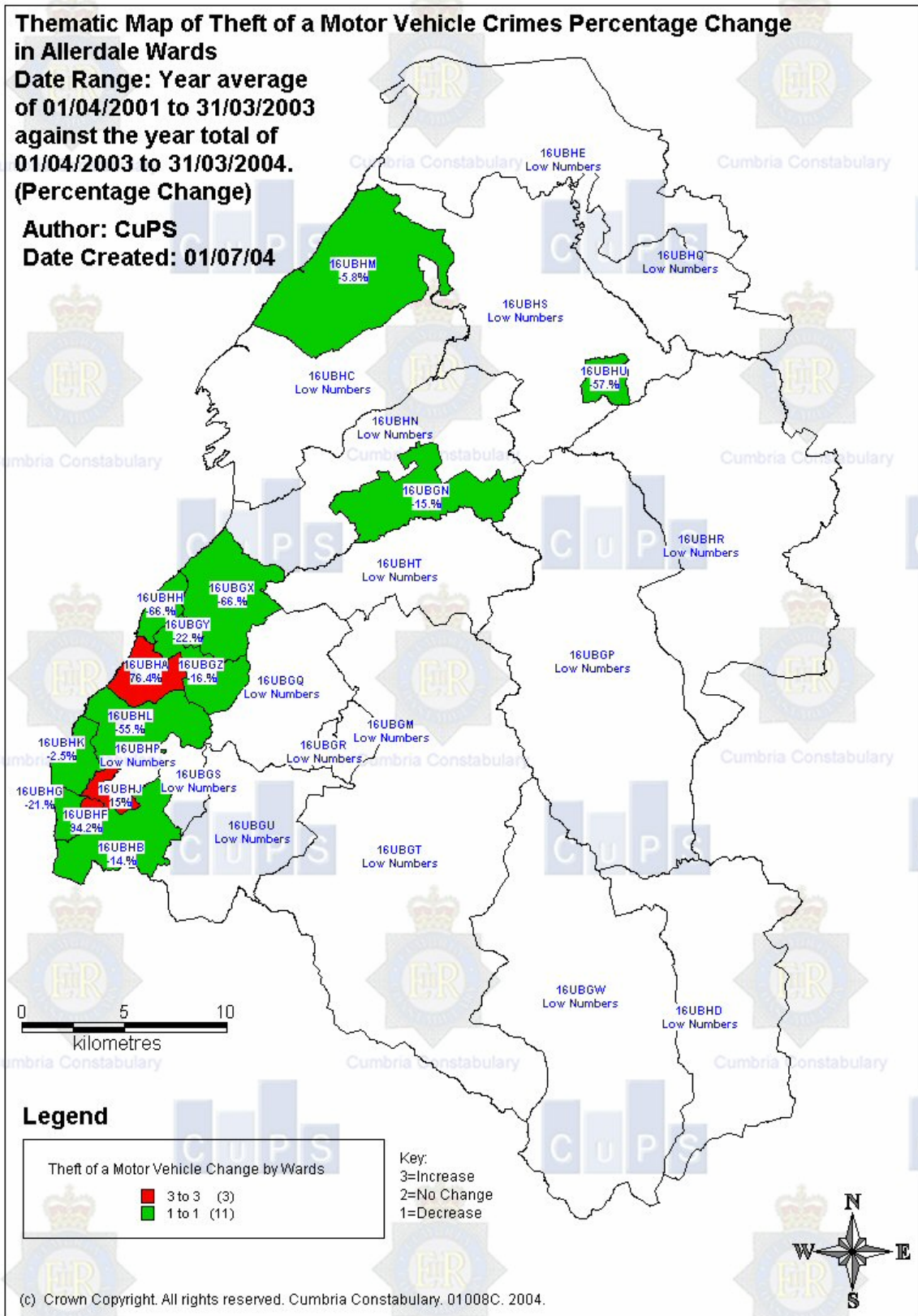


6.3.3.2 Thematic Map of Theft of a Motor Vehicle Per 1000 of the number of Houses  
Date Range: 01 April 2001 to 31 March 2004



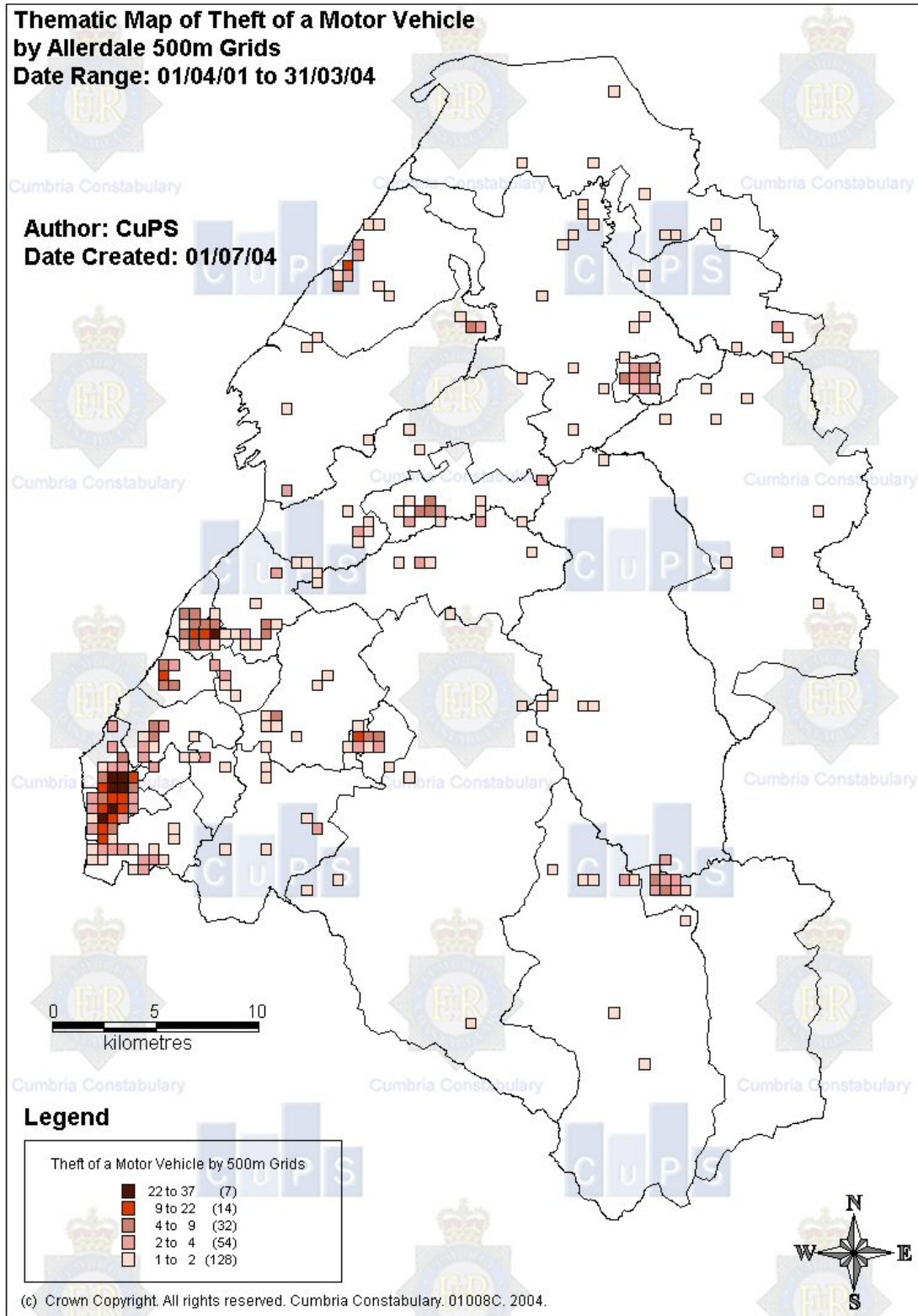
6.3.3.3 Thematic Map of Theft of a Motor Vehicle Percentage Change in Allerdale Wards

Date Range: Year Average of 01 April 2001 to 31 March 2003 percentage changed in year 01 April 2003 to 31 March 2004



6.3.3.4 Thematic Map of Theft of a Motor Vehicle Allerdale Wards and 500m grids

Date Range 01 April 2001 to 31 March 2004



## 6.3.4 Property

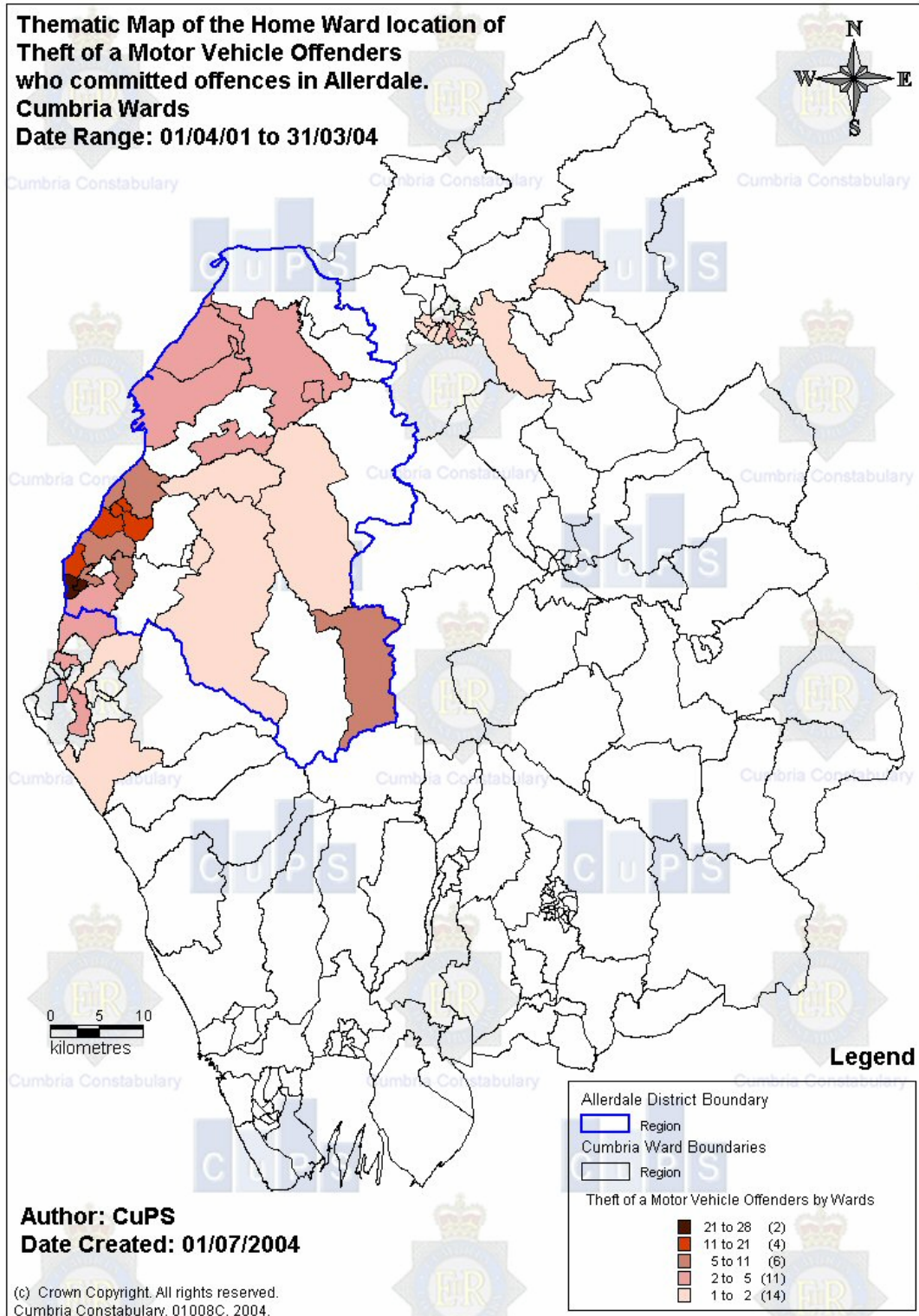
## 6.3.4.1 Table to show the types of property stolen in Theft of a Motor Vehicle Crimes in Allerdale.

Property Category	Number Stolen	Total Cost of Stolen Property	Average Cost Per Item
MOTOR VEHICLES	755	£1,642,256.00	£2,175.17
PLANT	10	£63,870.00	£6,387.00
CARAVANS	1	£8,000.00	£8,000.00
VEHICLE ACCESSORIES	12	£6,033.00	£502.75
MONEY CARRIERS	2	£3,005.00	£1,502.50
TRAILER	1	£1,500.00	£1,500.00
BOATS/MARINE EQUIPMENT	1	£1,200.00	£1,200.00
ELECTRICAL APPLIANCES	16	£992.00	£62.00
ANIMALS/BIRDS/FISH	6	£772.00	£128.67
TACK	7	£720.00	£102.86
TOOLS	7	£551.00	£78.71
FOOTWEAR	8	£516.00	£64.50
CLOTHING	10	£404.00	£40.40
ENGINES	1	£300.00	£300.00
CASES/BAGS/CONTAINERS	3	£121.00	£40.33
SECURITY EQUIPMENT	1	£110.00	£110.00
PERSONAL ITEMS	1	£102.00	£102.00
PEDESTRIAN CONTROLLED DEVICE (INC. PRAM)	1	£100.00	£100.00
SPORTING EQUIPMENT/NOT FOOTWEAR	1	£100.00	£100.00
CASH	2	£100.00	£50.00
TOYS/GAMING	1	£50.00	£50.00
TELECOMS EQUIPMENT/INCLUDING MERCURY	3	£17.00	£5.67
OPTICAL EQUIPMENT	1	£15.00	£15.00
BUILDING MATERIALS	1	£10.00	£10.00
CARDS/FINANCIAL/ID/STORE/LEISURE/UTILITIES	4	£4.00	£1.00
LICENCES	2	£2.00	£1.00
KEYS	1	£2.00	£2.00
FINANCIAL BOOKS/DOCS/VOUCHERS	4		
Total	863	£1,730,852.00	

6.3.5 Offenders

Due to a detection rate of 17 percent we can only analyse a proportion of offenders.

6.3.5.1 Thematic Map to show the home location of offenders for Theft of a Motor Vehicle in Allerdale



### 6.3.5.2 Table to show Theft of a Motor Vehicle Offenders in Allerdale. Home Location Outside Cumbria

County Name	Total
TYNE AND WEAR	1
<b>TOTAL</b>	<b>1</b>

### 6.3.5.3 Table to show Theft of a Motor Vehicle Offenders in Allerdale Offending in or out of home ward.

Ward	Home Ward Offence	Out of Home Ward Offence	Grand Total	% Offending in Home Ward
ST MICHAEL'S	7	15	22	32%
ELLENBOROUGH	9	8	17	53%
MOORCLOSE	10	6	16	63%
EWANRIGG	9	4	13	69%
ST JOHN'S	4	9	13	31%
MOSS BAY	6	5	11	55%
FLIMBY	3	7	10	30%
ASPATRIA	1	8	9	11%
KESWICK	8	1	9	89%
HARRINGTON	1	7	8	13%
SOLWAY		8	8	0%
NETHERHALL	5	2	7	71%
HOLME	1	5	6	17%
WAVER	1	5	6	17%
CLIFTON	1	4	5	20%
SILLOTH	2	3	5	40%
WIGTON	3	2	5	60%
DERWENT VALLEY		4	4	0%
BROUGHTON ST BRIDGET'S		3	3	0%
DALTON		3	3	0%
ELLEN	1	2	3	33%
ALL SAINTS	1	1	2	50%
BOLTONS	1	1	2	50%
SEATON		2	2	0%
CRUMMOCK	1	1	2	50%
MARSH		1	1	0%
Grand Total	75	117	192	39%

### 6.3.5.4 Tables to show percentage of Repeat Offenders of Theft of a Motor Vehicle in Allerdale

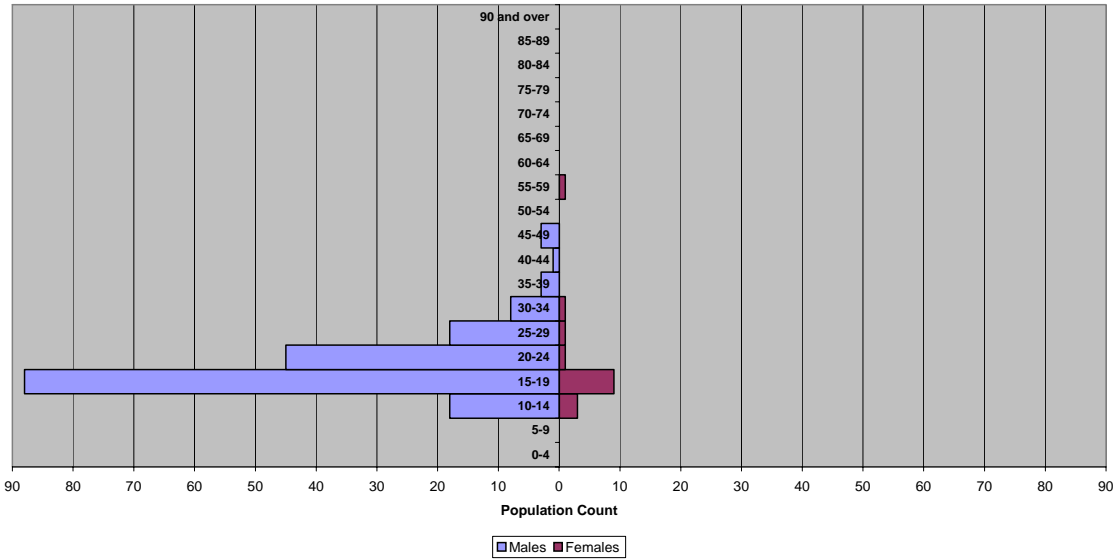
Number of Offences Committed by Each Offender	Number of Offenders	Number of Offences	Percentage of Repeat Offences
4	2	8	21%
3	3	9	23%
2	11	22	56%
<b>Total</b>	<b>16</b>	<b>39</b>	<b>100%</b>

	Number of Offences by Offenders	% of Offences by Offenders	Number of Offenders	% of Offenders
Repeat Offenders	39	28%	16	14%
Non Repeat Offenders	99	72%	99	86%
Totals	138	100%	115	100%

28% of the detected crime has been committed by 14% of the offenders.

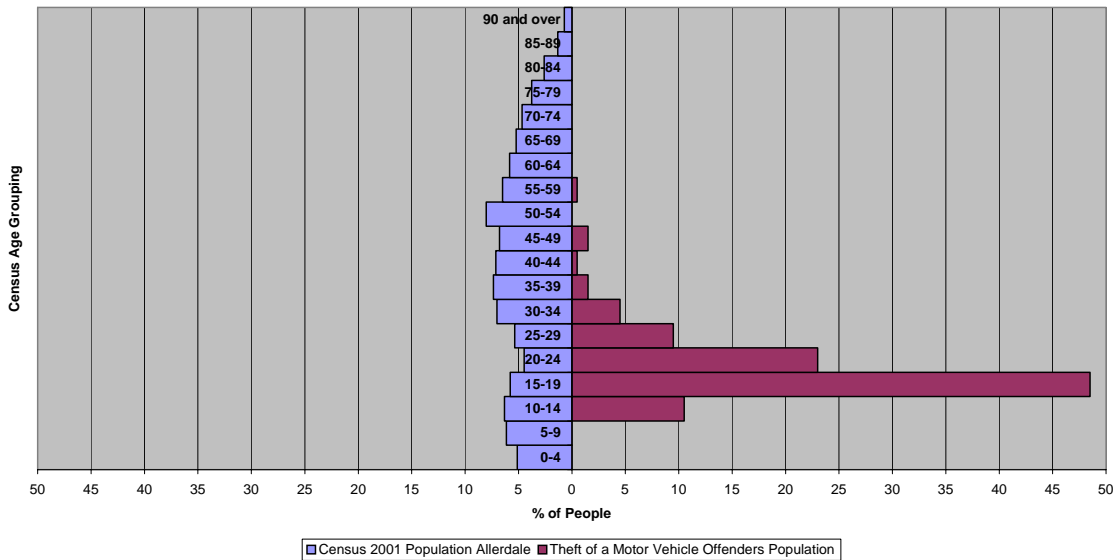
6.3.5.5 Table to show the Offender Age Profile (Population Pyramids) of Theft of a Motor Vehicle Offenders in Allerdale.

Theft of a Motor Vehicle Offenders Population Pyramid for Allerdale



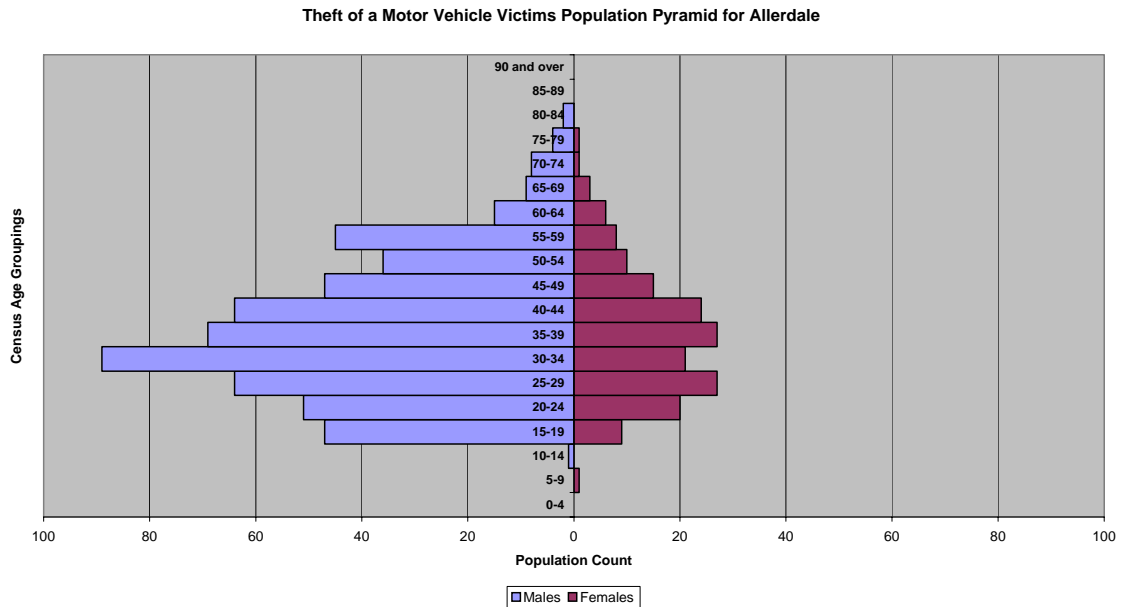
6.3.5.6 Table to show the Offender Age Profile (Population Pyramids) of Theft of a Motor Vehicle Offenders in Allerdale against the Population of Allerdale.

Theft of a Motor Vehicle Offenders in Allerdale against Census 2001 Population Pyramid by percentages.

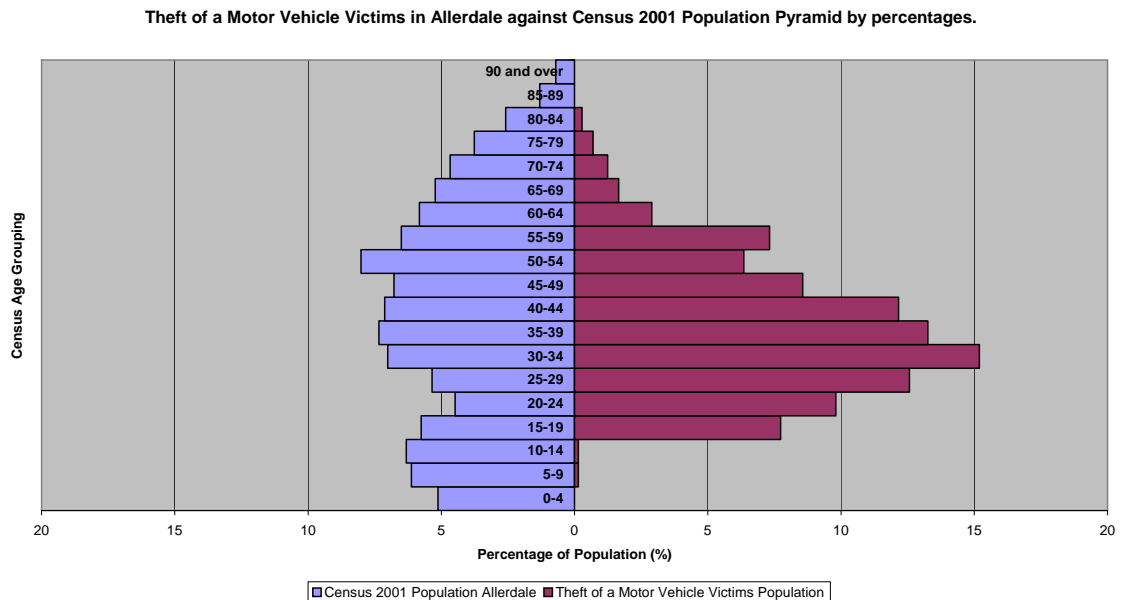


6.3.6 Victims

6.3.6.1 Table to show the Victim Age Profile (Population Pyramids) of Theft of a Motor Vehicle Victims in Allerdale.



6.3.6.2 Table to show the Victim Age Profile (Population Pyramids) of Theft of a Motor Vehicle Victims in Allerdale against the Population of Allerdale.



### 6.3.6.3 Tables to show the number of repeat victims and percentages of Repeat Victims of Theft of a Motor Vehicle in Allerdale.

Number of Repeat Offences against Victims	Number of Offences	Number of Repeat Victims	Percentage of Repeat Victims
2	24	12	100%
<b>Total</b>	<b>24</b>	<b>12</b>	<b>100%</b>

	Number of Offences (with Victims)	% of Offences (with Victims)	Number of Victims	% of Victims
Repeat Victims	24	5%	12	2%
Non Repeat Victims	483	95%	483	98%
Totals	507	100%	495	100%

2% of all victims are repeat victims and receive 5% of the crime.

These victims have received repeat victimisation over a three year period.