



West Cumbria Community Safety Partnership Plan 2012/13

Contents of Partnership Plan	Page No
Introduction & Partnership Structure	3
Context	4
The Changing Context of West Cumbria Community Safety Partnership	5
Priorities for West Cumbria Community Safety Partnership 2012/13	6
West Cumbria Community Safety Partnership Plan	7

Introduction

The Crime & Disorder Regulations 2007 place a statutory duty on Community Safety Partnerships (CSP's), to prepare a community safety strategic assessment of crime and disorder in their local areas. The aim of the assessment is to provide partners with an understanding of the levels and patterns of crime, disorder, and substance misuse in the county, and local areas, by providing statistical analysis and information about crime, changes and patterns over time and, where possible, explanation as to why these changes have occurred.

The 2011 Strategic Assessment will be used to highlight priorities for Community Safety in West Cumbria; West CSP will work together with other responsible authorities to tackle issues facing West Cumbria.

West CSP Strategy group will have the overview of the Partnership plan, and the Tactical Delivery Group will monitor performance against the priorities.

The Crime & Disorder Act 1998, made a statutory duty for each local authority to have a Community Safety Partnership in place made up for the following Statutory Partners:

Copeland Borough Council
Allerdale Borough Council
Cumbria County Council including Cumbria Fire & Rescue
Probation
Cumbria Police Authority
Cumbria Constabulary
NHS Cumbria

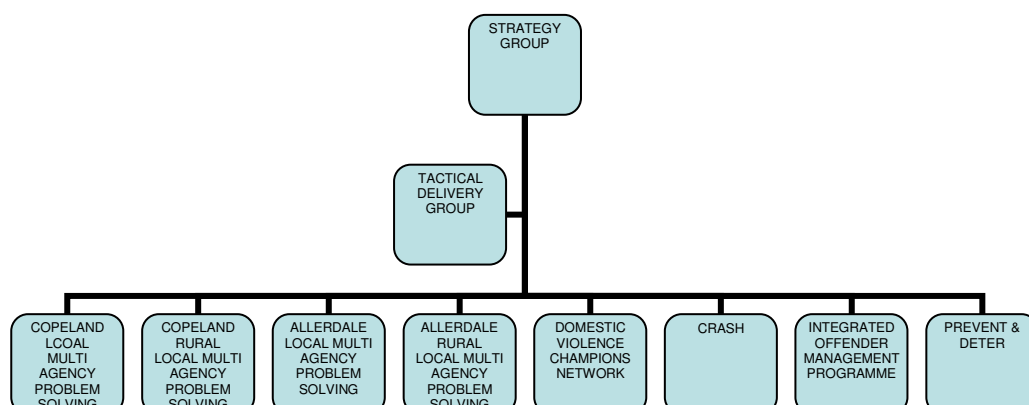
The Strategic Assessment will be used to provide the evidence base for the development of the Partnership Plan, by helping to identify targets and prioritise resources and interventions, in order to combat crime and disorder, informing strategic plans and policies. The Partnership Plan will be owned by the Tactical Delivery Group, who will provide quarterly updates to the Strategy Group.

West Cumbria CSP – A vision for the future 2012/14

In response to the changing partnership, it is essential that West Cumbria CSP pools its resources, and combines efforts to support realistic outcomes and goals. Governance and leadership within the partnership must be strong and robust to ensure recommendations to partners, results in actions to tackle crime and disorder. Early engagement with the Police & Crime Commissioner is crucial, to enable the partnership to demonstrate the benefits of a multi agency approach to solving crime & disorder.

West CSP will work to develop locality working through the Local Multi Agency Problem Solving (LMAPS) meetings, and strengthen working arrangements for Integrated Offender Management (IOM) Domestic Abuse and Prevent & Deter .

PARTNERSHIP STRUCTURE



Context

Allerdale District

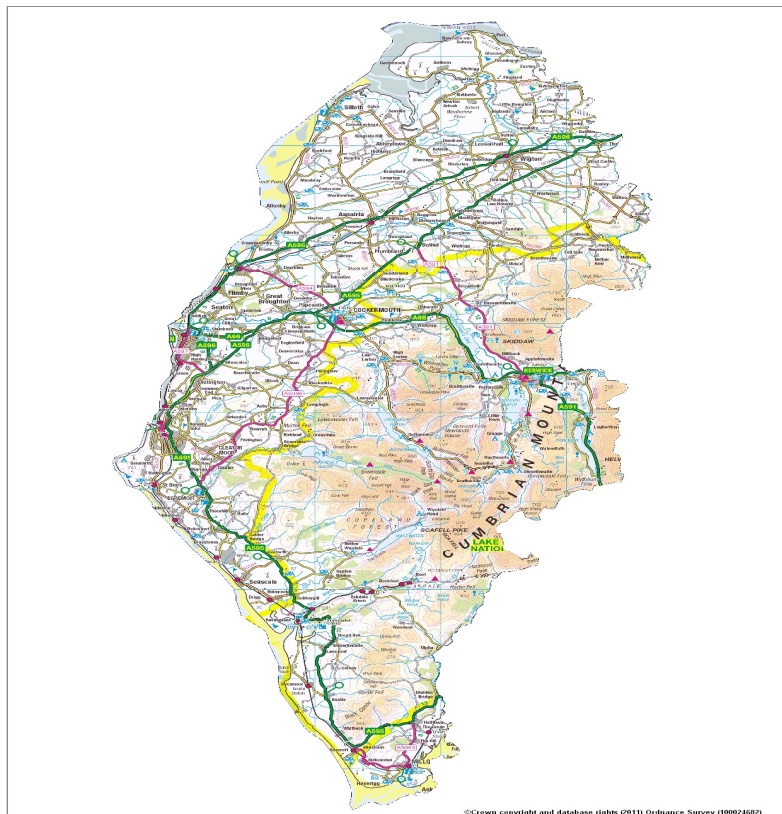
Cumbria is a relatively safe place to live where crime rates are low and total numbers of crime are falling year on year.

Levels of crime in Allerdale are falling overall, and have been since 2008/9. Whilst there has been an overall fall in crime, incidents of business crime and the rates of domestic violence are on the rise. The number of people killed or seriously injured on Allerdale's roads has also risen. Allerdale has significant issues around alcohol misuse. The district has the fourth highest rate of under 18s admitted into hospital with alcohol specific conditions. The wards of St Michael's, Moss Bay, and John St John's in Workington have particularly high incidences of crime overall.

Copeland District

Within the timeframe of the 2011 Strategic Assessment, crime in Copeland had risen by 4.4% (April 2011). Copeland was the only district in Cumbria where overall levels of crime were rising. There had been a rise in the number of incidents of criminal damage, areas of pressure revolve around, offences against the person, crimes against businesses and incidents of domestic violence. Copeland had the greatest decline in Cumbria for the number of people killed and seriously injured on the roads.

Crime & Disorder in Copeland was most prevalent in the wards of Hensingham, Mirehouse, and the Sandwith Wards of Whitehaven, levels of crime were highest in the Harbour Ward, which includes Whitehaven town centre.



The Changing Context of Community Safety Partnerships

The introduction of first Police and Crime Commissioner (PCC) in late 2012 will ultimately impact on the way Community Safety Partnerships function, the PCC will not be a responsible authority for Community Safety Partnerships, in the same way as Police Authorities are, but it is envisaged that they will be a catalyst for partners working together and the PCC may have the responsibility to deliver elements of reducing re-offending.

The PCC will have more of an oversight role of CSPs, rather than being involved in addressing community safety issues directly. It is imperative that West Cumbria Community Safety Partnership can demonstrate an effective coordinated approach that will address and tackle crime and anti-social behaviour, whilst responding to the findings within the Strategic Assessment.

Since the new coalition government came into power in May 2010 there has been significant changes for Community Safety Partnerships, the reduction of funding to public sector organisations has been a key issue.

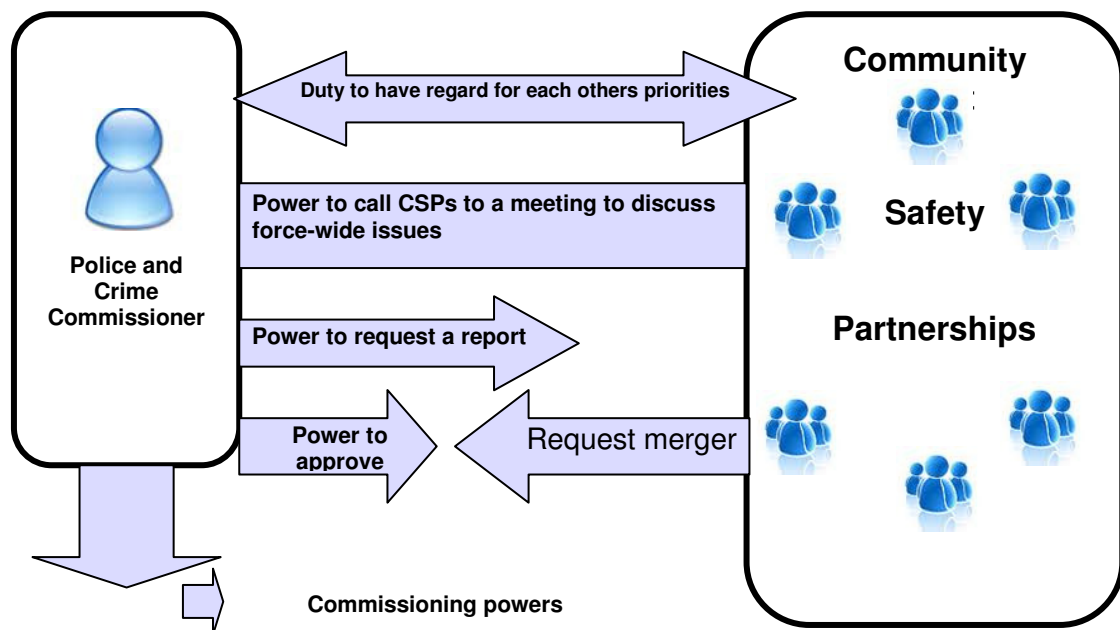
Future funding challenges:

2011-12 – 20% reduction in Community Safety Fund, paid to Cumbria County Council

2012-13 – Further 40% reduction

All Community Safety grant funding will be paid to the Police & Crime Commissioner.

PCC's Relationship with Community Safety



Based upon the 2011 Strategic Assessment West Cumbria Community Safety Partnership will focus on the following priorities:

- **Anti Social Behaviour** – we will aim to reduce Anti Social Behaviour, and deal effectively with repeat victims of Anti Social Behaviour.
- **Re-Offending** – We will target the most Prolific Offenders and ensure that they offend less, thus reducing their impact on local communities.
- **Domestic Violence** – We will encourage victims of Domestic Violence to report incidents to the Police and other partners, aiming to reduce levels of repeat victimisation.
- **Violent Crime** – We will work to reduce the impact of alcohol related violent crime in our communities and public spaces.
- **KSI** – Collision Reduction And Safer Highways Group (CRASH) Group have developed a ten year action plan
- **Crime** – We will look to maintain the low levels of burglary dwelling in West Cumbria and tackle economic crime affecting in particular the business community.

West Cumbria Community Safety Partnership Plan 2012/13

Priority	Aims	Baseline Data	Agency	Actions	Review Date
Anti-Social Behaviour	Reduce Repeat Victimization		Cumbria Constabulary	Monitor Gold Anti Social Behaviour Risk Assessment Victims through Local Multi Agency Problem Solving (LMAP)	
			Derwent & Solway HA	Provide intelligence and Officer Support to Prevent & Deter & Local Multi Agency Problem Solving Meetings	
	Reduce Alcohol Related Youth Anti-Social Behaviour		Prevent & Deter	Report on youths at the different stages of the its your choice programme Record number of young people referred to Prevent Deter Record & Monitor numbers accepted onto the Prevent & Deter Programme	
			Derwent & Solway Housing Association	Provide resources to support Youth ASB Monitor and report on referrals to youth drug and alcohol referrals	
			District		

			Delivery Group NHS Cumbria		
	Target ASB Hotspots	Cumbria Observatory Data	Prevent & Deter Cumbria Constabulary Derwent & Solway Housing Association	Data from Instant Atlas to be used to identify priority localities and wards to direct interventions Commit to using information to assist to identify and direct intervention projects. Work in partnership with the Constabulary to assist planned activities within neighbourhoods	
	Reduce Criminal Damage		Prevent & Deter Cumbria Constabulary		
	Reduce the number of Deliberate Fires Domestic and Other	Local Performance Management and working with LMAPS Cumbria Fire & Rescue Data	Cumbria Fire & Rescue Derwent & Solway HA	Work in partnership with Allerdale Borough Council to ensure the removal of fire materials within neighbourhoods	

Priority	Aims	Baseline Data	Agency	Actions	Review Date
Reduce Re-Offending	Reduce re-offending rate of the Integrated Offender Management Integrated Offender Management (IOM) Cohort	Provided from IOM project	Cumbria Constabulary	Further develop Integrated Offender Management (IOM)	
			Cumbria Probation		
			IOM Team	Address Housing Issues for IOM cohort through Housing Task & Finish Groups	
			Housing Authorities	Monitor referrals through Local Multi Agency Problem Solving (LMAPS)	
			Derwent & Solway HA /Impact HA	Undertake a Pilot to provide accommodation for an IOM Client	January 2012
			West Cumbria CSP	Secure continuation of IOM outreach worker post	December 2011

Priority	Aims	Baseline Data	Agency	Actions	Review Date
Domestic Violence	Reduce repeat victimisation rate	Data available on Police performance dashboard	All Agencies	Continue to develop and support the Domestic Violence Champions Network in West Cumbria	
	Increase Calls to Service	Domestic Violence Incidents			
	Increase number of arrests.	Incidents with a repeat victim			
		1 st time reporting victims	Derwent & Solway HA	Radio campaign to be delivered to increase the awareness of the not in my home domestic violence campaign	December 2011

Priority	Aims	Baseline Data	Agency	Actions	Review Date
KSI	Reduce the number of people killed or seriously injured on our roads using a multi-agency approach looking at how to make our roads safer through engineering, raising safety awareness through education and where necessary the use of enforcement.	Collision Reduction & safer Highways (CRASH) group data	Collision Reduction And Safer Highways (CRASH) Group have developed a ten year action plan		

Priority	Aims	Baseline Data	Agency	Actions	Review Date
Crime	<p>Reduce Violent Crime Multi agency contingency plans will address the following risks of increases in violent crime focussing in particular on the following events for 2012:</p> <ul style="list-style-type: none"> • Olympics 2012 • Euro 2012 • Queens Golden Jubilee 4/5 June 2012 		Prevent & Deter	Aim to reduce crime and the fear of crime, especially targeting burglary, and business crime.	
	<p>Minimise impact of Economic Crime</p>	2010/11 data to be provided by Derwent & Solway relating to credit union activity	Derwent & Solway HA	<p>Promote access to affordable credit to tenants and residents in Allerdale</p> <p>Promote Credit Union as an alternative to door step lending</p> <p>Partnership working around Fuel Poverty initiatives</p>	